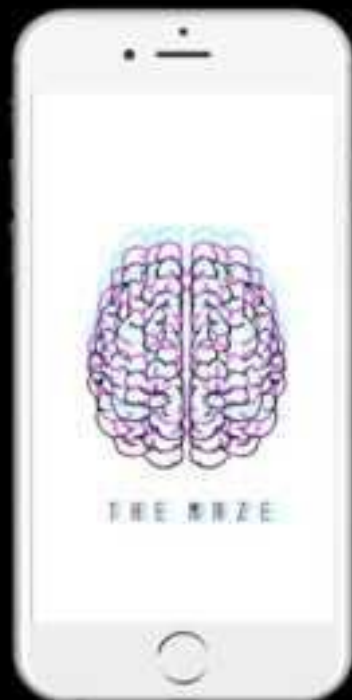
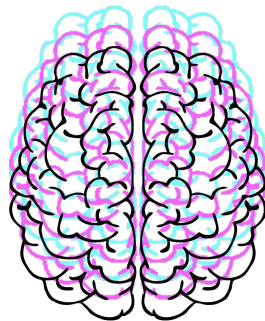


AMAZE IDEATION PROCESS

Team Sum: Eunice, Khairranis, Jun Wee & Ziyun





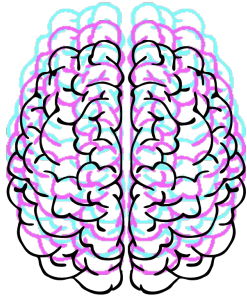
Purpose

A space that is long and unclear that boast new challenges,
using new tools, new languages,
and new solutions to solve and discover
our simulated world.



Concept

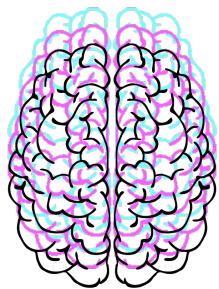
- The Idea of virtual world may seem idealistic. But that is just a superficial side of it. In fact, it is a scary world, a world that is taking over the reality.
- The aim of this project is to educate people, and to raise awareness about the virtual world.
- Maze is a purpose-built, walk through attraction that offers an amazing journey through secret passages...with animated monsters, mind-bending optical illusions, and crazy photo opportunities!



Instructions

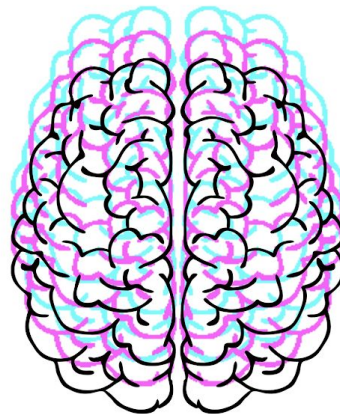
- Audiences is asked to download the application.
- The application will show their current location through GPS.
- Once they enter the maze, they can only rely on the app.
- The maze run along with familiar landmarks.
- They start off with the map showing 4 exits.
- They have to scan the QR code so that their exit route will be clearer.
- If they fail to escape within 10 minutes, there will be jumpscare on the screen and route of exit would be shown.





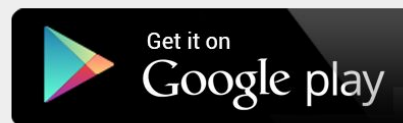
The App

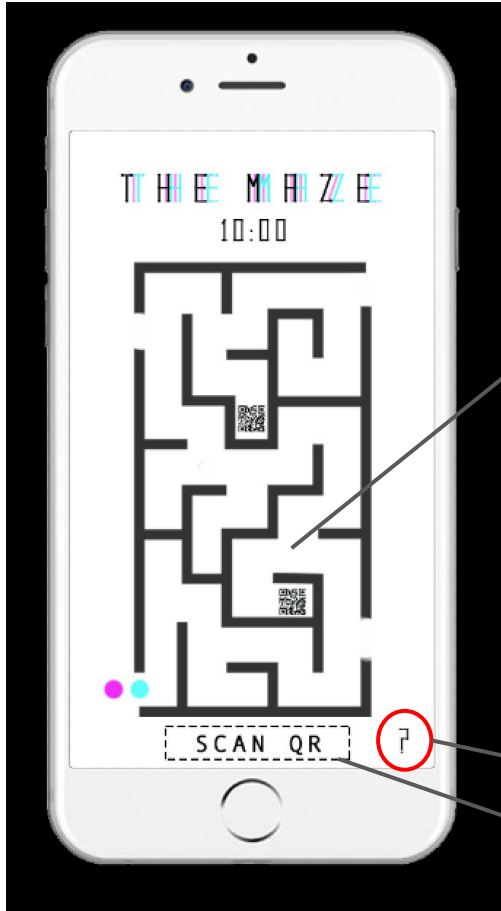
- Free Downloads
- It is recommended to play while connected to a network in order to obtain accurate location information.
 - User Friendly
- Inspired by how *Pokemon Go* (By *TechCrunch*) was created



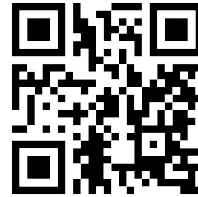
TIT HIEE MY HIA ZZ EE

Available on:





Scan QR Code



Equipments

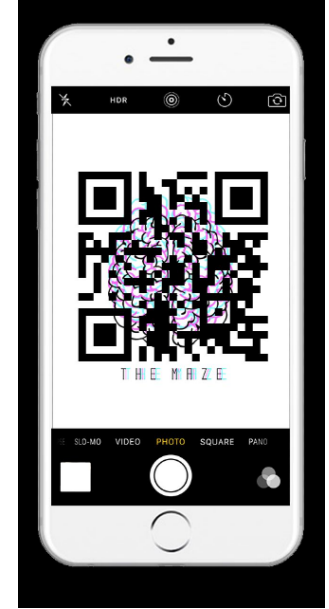
Equipments needed for participants

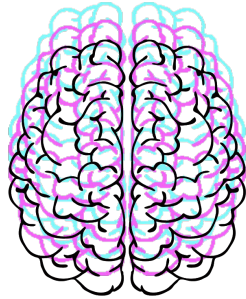
For the participants

- Wifi (Downloading the App)
- Smart mobile phones (To follow the guide of the maze)

Press to seek help

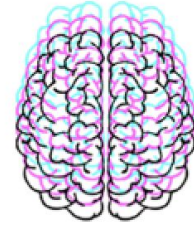
Press this button to scan the QR code





Instructions

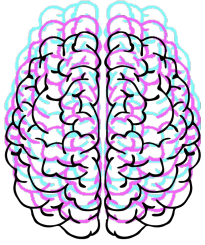
(In game)



THE MAZE

Enter your name into the
system and start
venturing into the
virtual world.
Will you be lost in the
virtual world or the
reality?
Follow the gps and find
the QR codes!
Can you then break
yourself free from a
custom built, simulated
world?
You have 10 minutes to
escape this maze!
Goodluck!

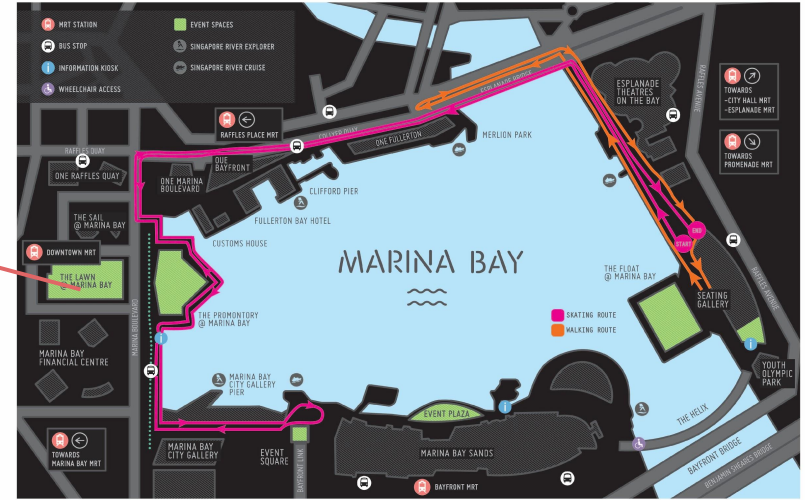




Location

The Lawn @Marina Bay

- 13,000sqm site is located along Marina Boulevard
- Introduce public amenities and short-term uses that can enliven The Lawn to be a gathering place for the community
- a vibrant space that draws people and encourage interaction on a whole new level
- **Past events:** We Love Singapore – Legacy, Fitness Marathon 2017, Rise & Shine Carnival, Rise & Shine Live Great Carnival 2014, Family Night Out – Ultimate Play

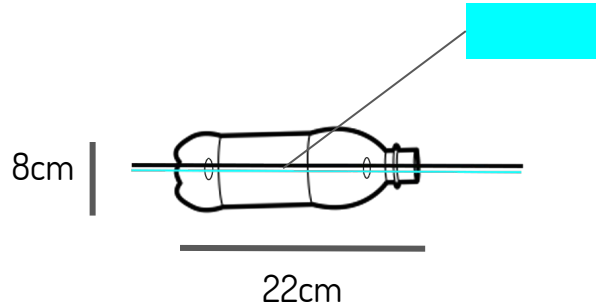




Assembling

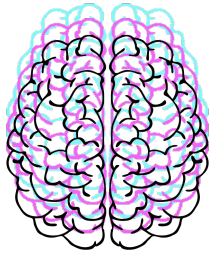


LED Light Strips - Waterproof



Choice of light colour

- Turquoise
- White

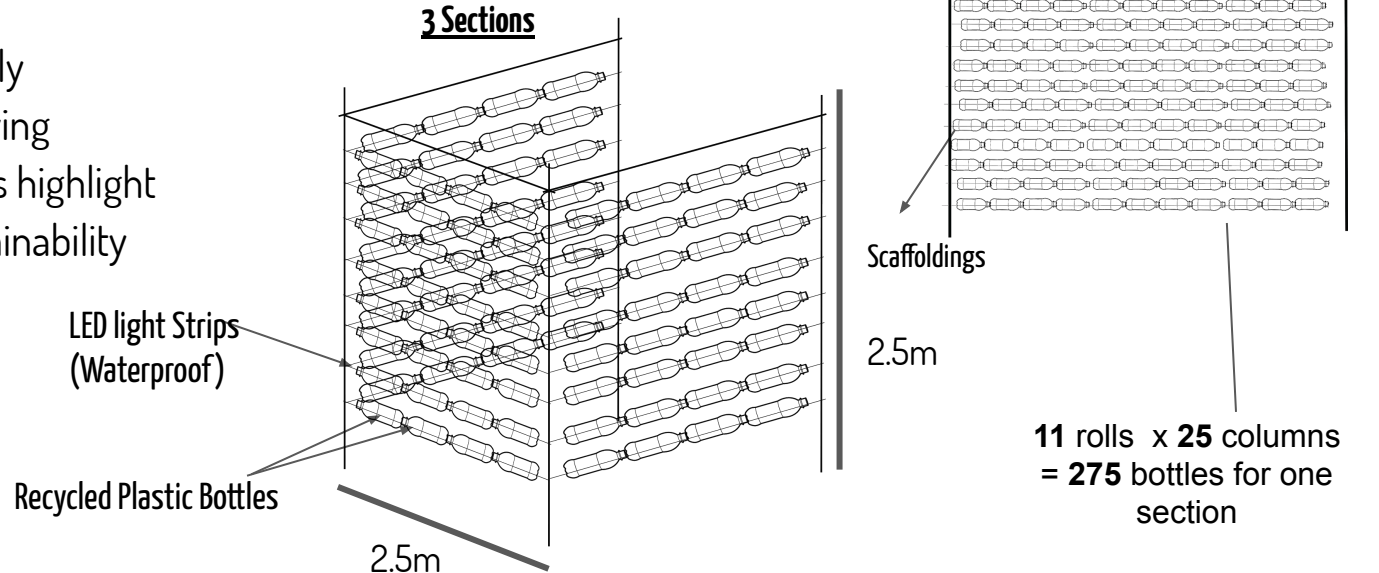


Materials

Environmentally-friendly materials or energy-saving lighting, the installations highlight the importance of sustainability

Materials used for location setup

- LED light Strips (Waterproof)
- Plastic Bottles (Recycled)
- 1 section of Scaffoldings





Budget

Item	Quantity	Unit Price	Price
LED Light Strips (Turquoise & White)	500m	\$8 per/metre	\$4000
Scaffoldings (Dunamis Engineering Scaffolding Services)	Area: 20.5m by 25m	Project base	\$12000 +/-
Recycled bottles	20,000	-	Recycled
Wifi Routers Huawei E5573 4G LTE Mobile Hotspot + Sim card for Routers	1	\$199 +39.90	\$238.90
Transportation	5days	\$100 per day	\$500
Creating The Maze App			KIV
Man powers - Community centre and schools (to connect the lights into the bottles)	50		Volunteer
Renting booths	1	\$250	\$250
Electrician & including supplies	5	-	\$2000
Storage Space	1month	\$150	\$150
		Total	\$19,088.90



Reduce, Reuse & Recycle

To live up to the idea of sustainability, we decided to reuse all the items used for next possible event. How can we ensure bottles are stored safe and secured?



Collaboration- NEA

Proposed: To propose to NEA if bottles can be collected for this sustainability project.

Explain the purposes and what we would do after event has ended.

Amount of recycled bottles needed: 20,000



Collaboration

CIP & Service Learning

CIP and Service Learning activities aim to nurture in students social responsibility and to develop a sense of belonging and commitment to the nation..

Each school can decide how best to promote community involvement in their students appropriate to their age levels.

Proposed - to obtain from school a list of the latest approved schools/ institutions to engage in community service/ volunteers

Why?

Student: Accumulated CIP service points can help a student to get to a school or course of choice by lowering the aggregate by a maximum of 2 points

Us: Decrease cost incurred and work could get done faster.



Your Private Storage Space

Storage sizes available – from 10sf to 200sf.

How much does it cost? –Cost depends on the size of the storage unit. Monthly rent for a small unit starts from as low as < \$100.

Other cost involved?

- 1. Refundable security deposit
- 2. One time administrative charge
- 3. Deposit for access card

Minimum storage period– minimum storage period is two (2) weeks

Extend storage period?– The storage contract will automatically be extended on a monthly basis unless we receive notice from you of your intention to move-out.

Access to storage unit– Access storage unit anytime, 24 hours 7 days a week.

Email: info@lockandstore.com

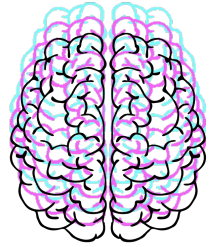


Timeline

Part 1

1 Dec 2017 to 8 Feb 2018

Weeks	Schedules/ Plan outs	Informations/Remarks
Week1 1 Dec to 7 Dec 2017	1-2 Dec : On Site - Visiting the site (final measurements) & Meeting up with the App creator 2-3 Dec : - Meeting up with Vendors for Scaffolding 3-4 Dec : - Confirming Budget & confirming dates partnership with community centres and schools 5 to 7 Dec : - Distributing the recycled bottles from NEA	Remarks: NEA Plastic bottles: to be ready before 5 Dec for distributions
Week 2 8 Dec to 14 Dec 2017	8 Dec : - Meeting up with the App creator 8-14 Dec : Production for volunteers/school - Removing of plastic wrapper on the bottles - Cutting holes into the plastic bottles	Remarks: App: Meet App creator again to discuss ideas/problems. (QR code design)
Week 3 15 Dec to 21 Dec 2017	15 Dec : - Meeting up with the App creator 15-21 Dec: Production for volunteers/school - Removing of plastic wrapper on the bottles - Cutting holes into the plastic bottles	Remarks: App: Finalise application details



Timeline

Part 2

1 Dec 2017 to 8 Feb 2018

Weeks	Schedules/ Plan outs	Informations/Remarks
Week 4 22 Dec to 28 Dec 2017	22-28 Dec: Production for volunteers/school - Removing of plastic wrapper on the bottles - Cutting holes into the plastic bottles	Holiday: - 25 Dec 2017: Christmas - 31 Dec 2017: New Year Eve
Week 5 29 Dec to 4 Jan 2018	29 Dec- 4 Jan: Production for volunteers/school - Removing of plastic wrapper on the bottles - Cutting holes into the plastic bottles 2-4 Jan : On Site - Installing Scaffoldings to create the maze	Deadlines: Plastic Bottles: Collection on 4 Jan 2018 Holiday: - 1 Jan 2018 - New Year
Week 6 5 Jan to 11 Jan 2018	5-11 Jan : On Site - Installing Scaffoldings to create the maze - Insert LED light Strips & Rods into the bottles & Wiring works 7-9 Jan : - Meeting the creator and designer of the app for final check before launching onto the App store and Google play 9 Jan : - Launching the App	Remarks:

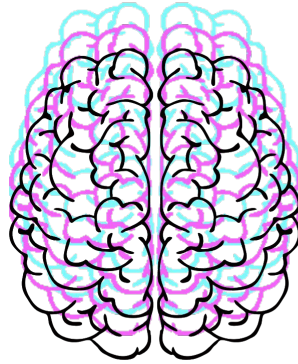


Timeline

Part 3

1 Dec 2017 to 8 Feb 2018

Weeks	Schedules/ Plan outs	Informations/Remarks
Week 7 12 Jan to 18 Jan 2018	12-18 Jan : On Site - Insert LED light Strips & Rods into the bottles & wiring works 16-18 Jan: Testing the app on site - Try out the App, check for errors or do changes if needed	Remarks: Lights: Electricians to connect the LED lights, setting up.
Week 8 19 Jan to 25 Jan 2018	19-22 Jan : On Site - Safety test 22-25 Jan: Testing the app on site - Doing trial run on the app	Remarks: Scaffolding: Checking on the structure's stability. Wiring: Weatherproof & make sure there is no loose wires
Week 9 26 Jan to 1 Feb 2018	Final preparation week Preparing materials, pocket wifi & equipments needed for the booth	Remarks: In case of weather, accidents or other circumstances.
Week 10 2 Feb to 8 Feb 2018	6-8 Feb: On Site - Bring in booth for the event 8 Feb: On Site - Final Check	Remarks: Check loose wiring, not functioning lights to be replaced, booth, Scaffolding. Most Important SAFETY



References

- BorderXing Guide
- Dan Flavin's Light Installation
 - Mirror Maze

INVENTORY:


- WATCH
- COMPASS
- CAMERA
- 1L WATER
- SMALL TUNA
- 2x CARROTS
- 2x BANANAS
- BREAD ROLL

LESSONS:

- LEARN TO VARY SPEED
- GO VERY SLOW IN BORDER ZONE
- USE CROPS FOR COVER

SUNDAY 26 AUGUST 2004

- CROSS LINES OF DRIFT AT 90°, BUT WITH CAUTION.


WEATHER 



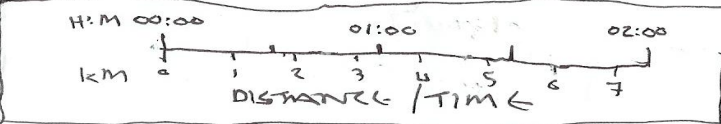
BORDER XING GUIDE



1/100 000
1cm : 1km


MILITARY
OBSERVED
AROUND
RAILWAY

TOTALS:
TIME: 03:45
DIST: 24 km



BORDERXING: KÖRMEND TO GÜSSING: HEALTH BUNTING

HEATH BUNTING

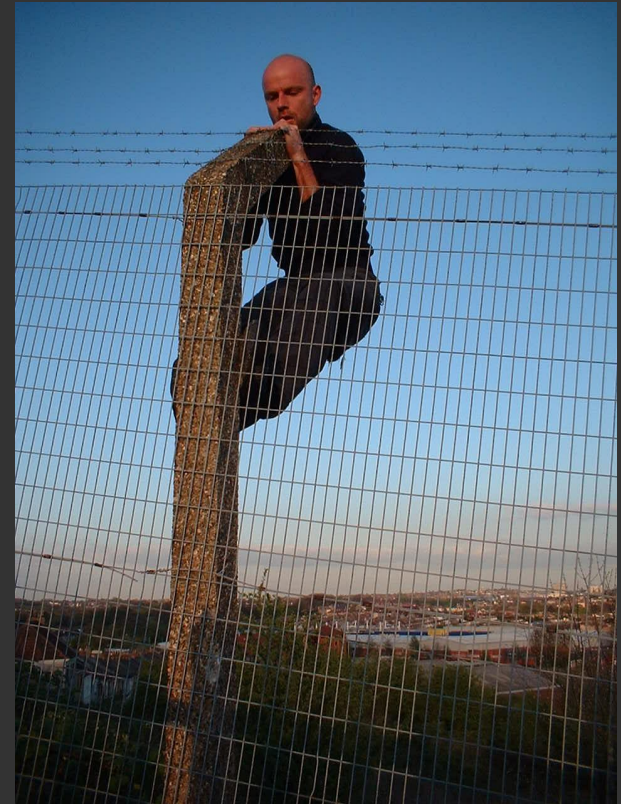
Born: 1966

Citizenship: United Kingdom

Occupation: Contemporary Artist

Years active: 1980s-present

Style: Conceptual art, net.art, culture jamming, tactical
medi, interventionist,





Between Hungary



Between Germany



Between Andorra



Portugal's Bord



Between Italy



Between France



Between Brristol, UK



Between Belgium



Germany's Border

WHY?

- To create and publish a guide to crossing European national borders without proper authorisation.
- To explore how our identity is constructed and controlled in virtual space
- A reversal of the way that borders restrict movement
- Challenged the supposed liberties that accompany the concept of the Internet as a borderless space.
- Breaking down the division between art and everyday life



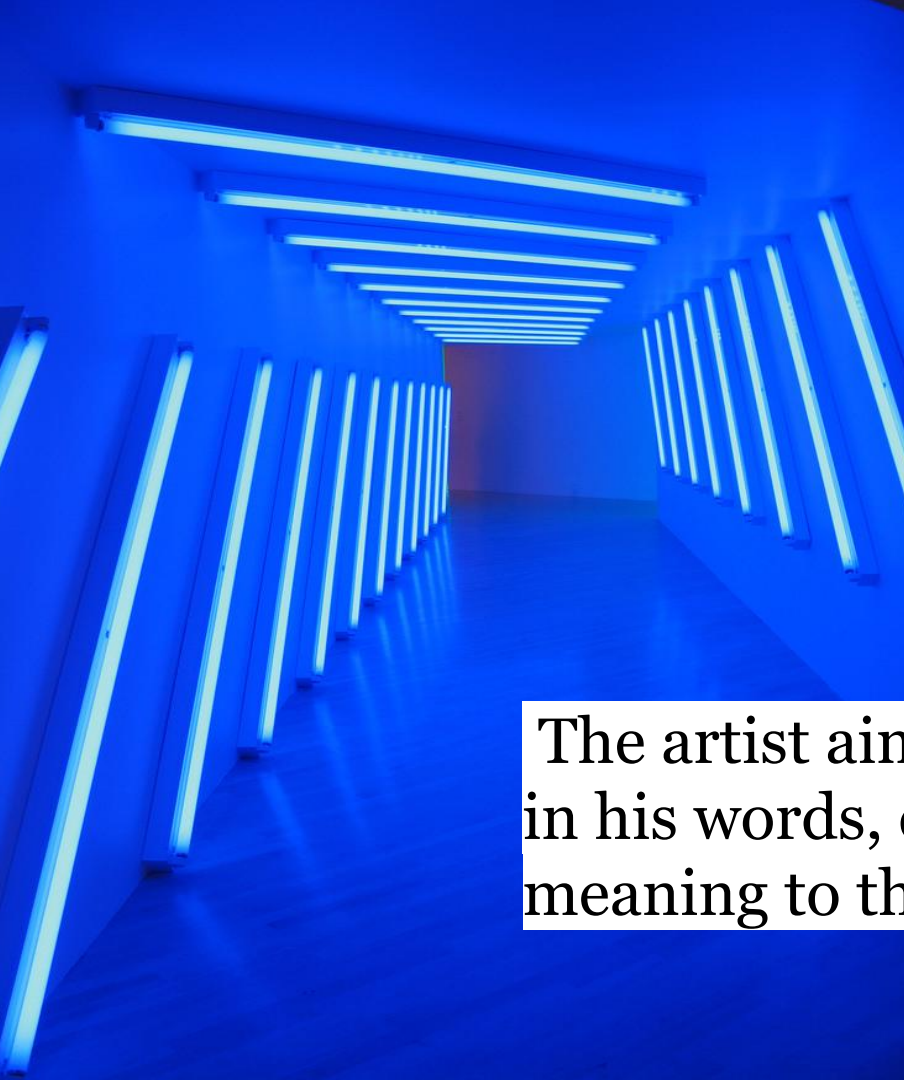
Revisiting The Great Lightworks

of Artist Dan Flavin

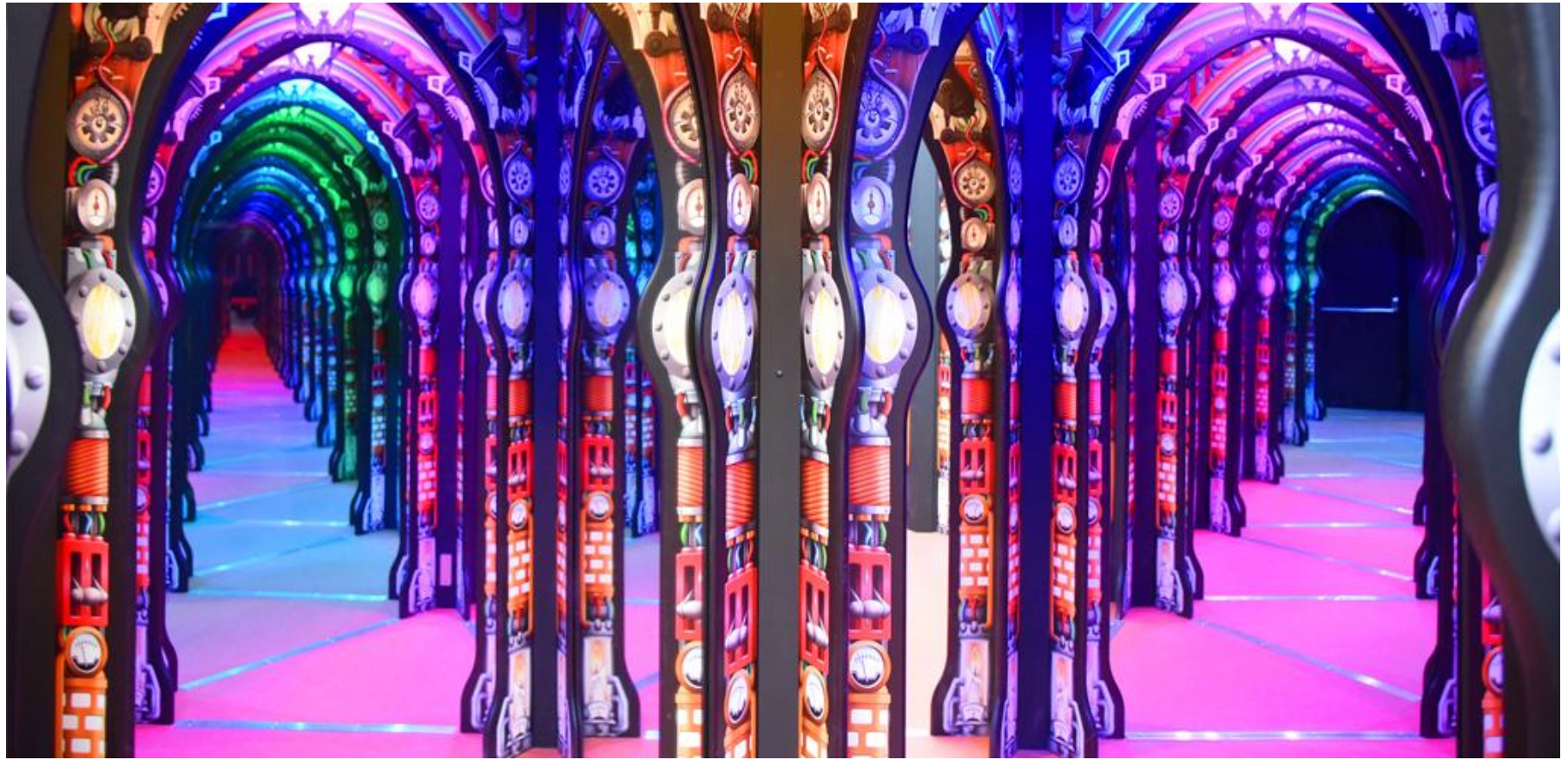
Dan Flavin

- Born on April 1, 1933 in New York City
- Served in the US Air Force as an air weather meteorological technician in Korea, after which he returned to New York and attended art history classes at the New School for Social Research and Columbia University
- American minimalist artist famous for creating sculptural objects and installations from commercially available fluorescent light fixtures.

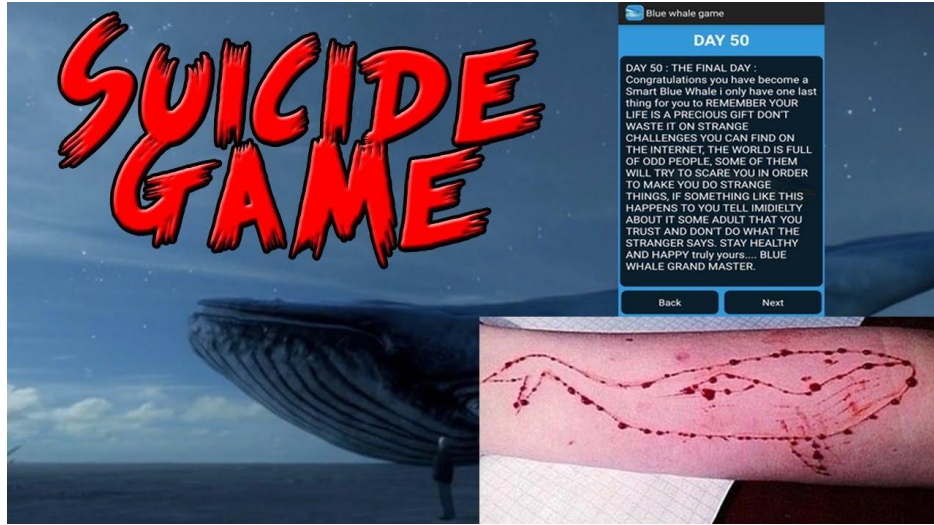




The artist aimed to use these light fixtures to, in his words, create “situations” that gave new meaning to the spaces around them.



Professor Crackitt's Light Fantastic Mirror Maze, this trippy exhibition will feature a total of 105 mirror cells, and more than 17 interactive exhibits, including mind-altering holograms, tricky fake exits, and madcap experiments on the mysteries of light.

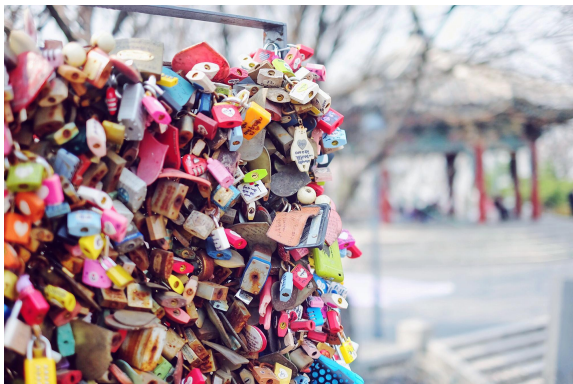


The Blue Whale

A teen boy comes across the online game, [The Blue Whale](#). He is given one challenge after the other. He accomplishes every task and keeps on moving to the subsequent levels. The final and concluding challenge asks him to commit suicide. He clicks himself on top of a building and jumps.

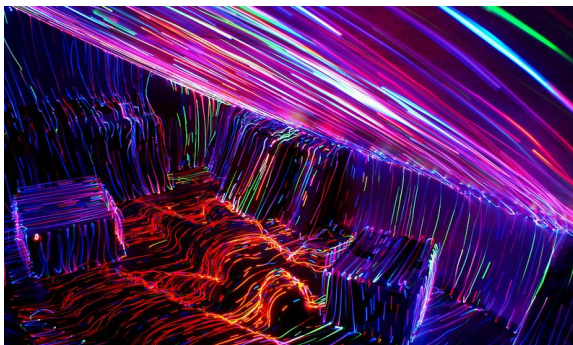
It's not publicly available . The administrators strictly control who can gain access to the game. Admins identify their victims and send them the link, which once opened on their phones, copies every single data from their devices to the administrator's

Q: What can we learn from this? How are we inspired from this case?



1

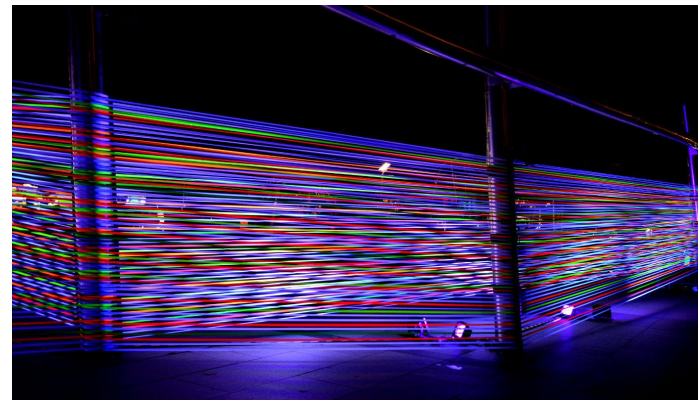
"Love Locking" in South Korea



*Light in the dark: Long exposure shots
using LED light, Janne Parviainen*



Inspirations



"HORIZONTAL INTERFERENCE"

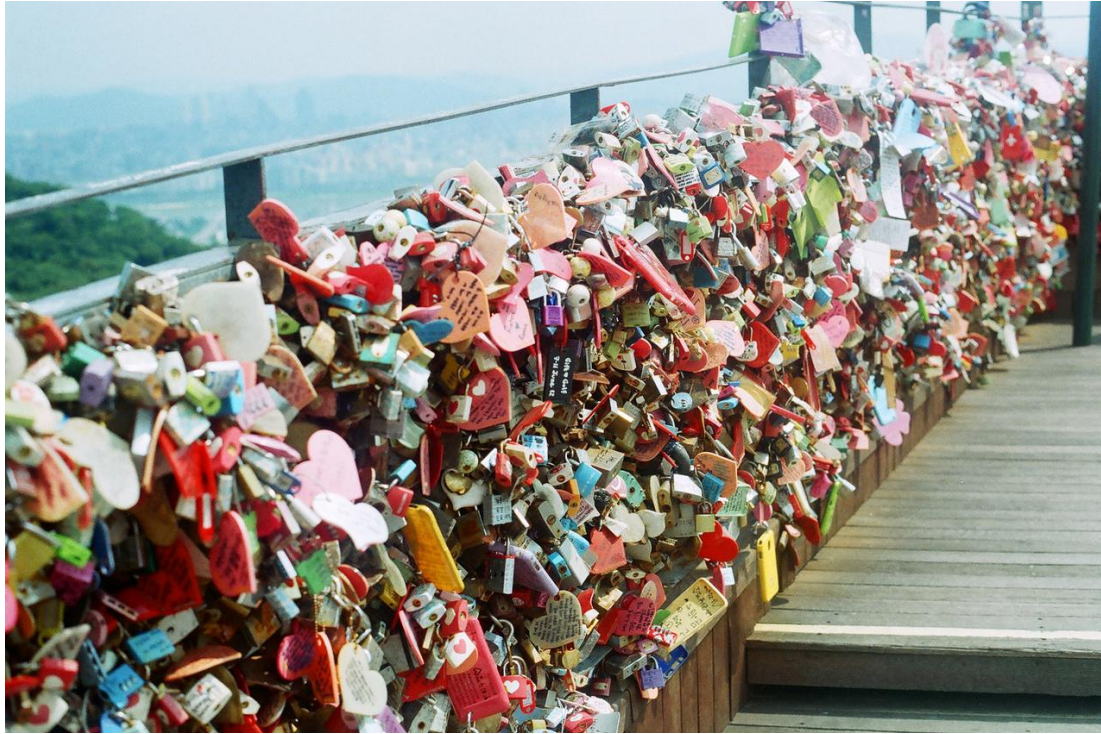
2



Maze Runner

4

3



1

Namsan Seoul Tower was built in **1969** as Korea's first integrated transmission tower beaming television and radio broadcasts across the capital.

Like the Pont Neuf bridge in Paris, couples head to the tower to lock their "*padlock of love*" onto the railing and to dream that their love will last

Horizontal Interference

Horizontal Interference is formed by a colourful cord construction which connects the trees in a simple manner.

This architecture of wire revolves around abstract and geometric shapes, often embedded in natural environments.

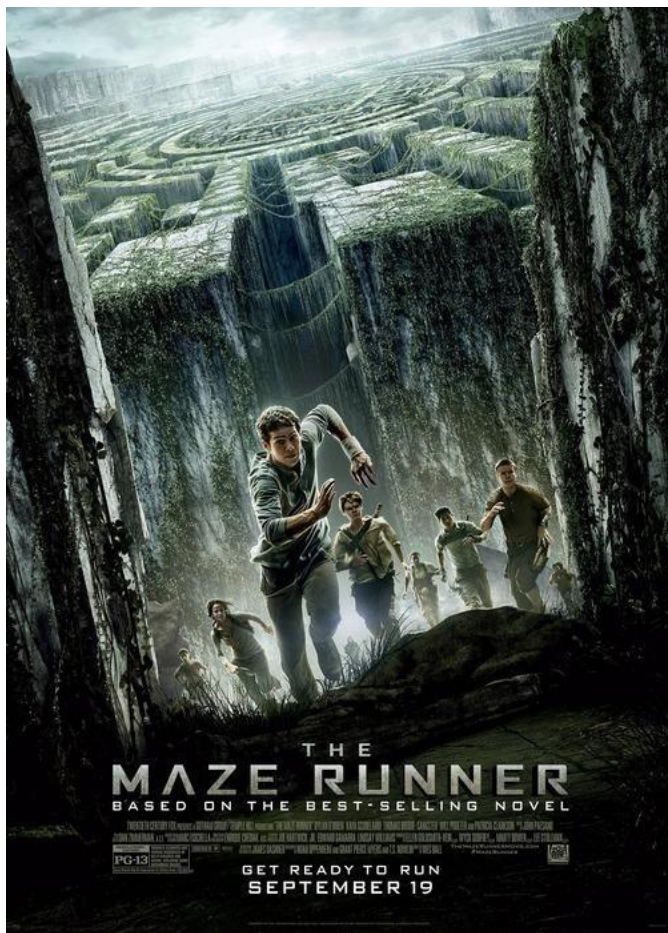
The artists were fascinated with the **medium of light and its role in connecting people.**





3

Finnish artist Janne Parviainen creates dazzling, futuristic images by **painting** with battery-powered light.



4

The Maze Runner is a young-adult dystopian science-fiction novel and the first book in *The Maze Runner* series by James Dashner.

Film (2014)